

chemSHERPA-AI Quick Manual

v5.1 edition

Tool Version: V2R1.01.0 or later
(External list Version: 2.11.00 or later)

Jun 3, 2025

Joint Article Management Promotion-consortium
(JAMP)

- * This is a manual that describes the main points of tool operation from data input to answer data creation with chemSHERPA-AI.
- * Please use this as reference information when creating data directly using chemSHERPA-AI Data Entry Support Tool.
- * We hope it will be helpful in understanding chemSHERPA-AI.

Table of contents

<u>1. Obtaining and Starting the Tool / Data Creation</u>	<u>3</u>
<u>2. Request Data Creation</u>	<u>4</u>
<u>3. Data Entry (Information of Composition)</u>	<u>5</u>
<u>4. Data Entry (Information of Compliance Assessment)</u>	<u>7</u>
<u>5. Integration</u>	<u>9</u>
<u>6. Confirming Obtained or Entered Data</u>	<u>10</u>
<u>7. Entering SCIP information</u>	<u>12</u>
<u>8. Data update for older version</u>	<u>14</u>
<u>9. Creating data for answering the request file</u>	<u>16</u>
<u>10. CI Data's AI Initiatives</u>	<u>17</u>

1. Obtaining and Starting the Tool / Data Creation

For detailed instruction, refer to the latest "Operation manual" for Articles.



3.4. "Execution of the program"
5. "Entering new data"

1 Download and extract the tool package

Download the compressed files of Tool for Article cS-AI(V2R1.xx.x) (Zip file) from the chemSHERPA website, and extract it to a folder on your PC.

The tool package can be downloaded from the following URL: <https://chemsherpa.net/english/tool>

- * Access the download page from the Data entry support tool tab to obtain the package.
- * In order to download the package, you will need to enter a representative name, company name, and email address.
- * After extracting the package, do not change, move, or delete the structures or names of the files and folders.

2 Execution of the tool

Click  **Article.exe** in the ARTICLE folder among the extracted files to start it.

- * After a certain amount of time has passed, the tool's time limit function may stop the tool from starting.

3 Create data on the general information view

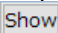
Enter information related to the Issuer / Authorizer and product/part on the general information view.

Items marked with * must be entered

4 Enter composition data

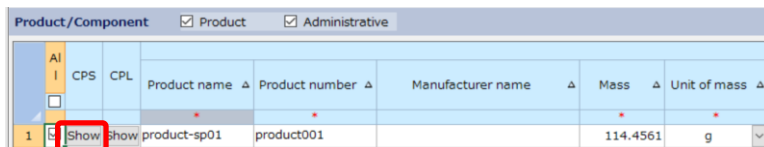
On the general information view,

(1) select a product

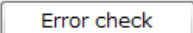
(2) click  button of CPS.

The application switches to the Composition view so that you can enter required information.

Items marked with * must be entered.

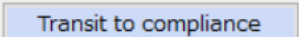


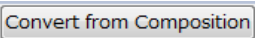
AI	CPS	CPL	Product name	Product number	Manufacturer name	Mass	Unit of mass
1	show	product-sp01	product001			114.4561	g

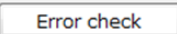
Click  button, confirm that there are no errors, and then press



5 Enter compliance data

On the Composition view, click  button to switch to the compliance view.

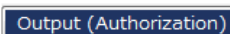
Click  button on the compliance view, and then amend properly.

Press the  button, confirm that there are no errors, and then press

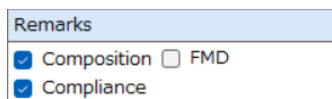


6 Confirm information, and then output the file

Click  button, confirm that there are no errors, and then press



Check the checkboxes for Composition and Compliance information in the Remarks on the General screen.



Remarks
<input checked="" type="checkbox"/> Composition <input type="checkbox"/> FMD
<input checked="" type="checkbox"/> Compliance

2. Request Data Creation

For detailed instruction, refer to the latest "Operation manual" for Articles.



9. Create requester data

1 start the chemSHERPA-AI (creation assistance) tool

2 Enter requester information

Check requester information entry

File Company Language Tool

chemSHERPA-AI Article Tool

General

Issuer/Authorizer

Reference number * Remarks

Preparation Date * <yyyy-mm-dd> ☒ Composition ☐ FMD

Authorization Date * <yyyy-mm-dd> ☒ Compliance

Item English Local

Company name *

Name of contact *

Comment

Authorizer name *

Reporting of Candidate of Declarable Substances ☐ Yes ☐ No

SCIP info. ☐ Composition/FMD ☐ Compliance

Requester ☒ Information on requester On/Off

Reference number * Remarks

Request date * <yyyy-mm-dd> ☒ Composition ☐ FMD

Reply deadline <yyyy-mm-dd> ☒ Compliance

Item English Local

Company name *

Requester Name *

Requester Comment

Reporting of Candidate of Declarable Substances ☐ Yes ☐ No

Items marked with * must be entered

To enter company/requester information, click [Company], and then click [Requester]

File Company Language Tool

chemSHERPA-AI Article Tool

General

Issuer/Authorizer

Issue Requester

Reference number * Remarks

Preparation Date * <yyyy-mm-dd> ☒ Composition ☐ FMD

Authorization Date * <yyyy-mm-dd> ☒ Compliance

Item English Local

Company name *

Name of contact *

Comment

Authorizer name *

Reporting of Candidate of Declarable Substances ☐ Yes ☐ No

SCIP info. ☐ Composition/FMD ☐ Compliance

Requester ☒ Information on requester On/Off

Reference number * Remarks

Request date * <yyyy-mm-dd> ☒ Composition ☐ FMD

Reply deadline <yyyy-mm-dd> ☒ Compliance

Item English Local

Company name *

Organization ID

Company ID

Company name

Division name

Title

Requester Name

Email address

Phone number

Extension number

Postal code

Country or Region

Prefecture

Municipality

Address

English must be filled in: ☐ No

3 Enter product/component information

Product/Component ☒ Product ☒ Administrative

Citing Delete Add

Requester

Product name * Product number * Product name * Product number * Manufacturer name * Mass * Unit of mass * Product series name

1 AI

2 Show Show

3 Show Show

4 Show Show

5 Show Show

Enlarge or Reduce: Ctrl+scroll

Sort: click ▲▼ button of the details side of Product/Component

Error check Temporary save Output (Request) Output (Authorization)

(1) Enter the product name/ product number, (2) check the product to request, and then (3) click [Output (Request)]

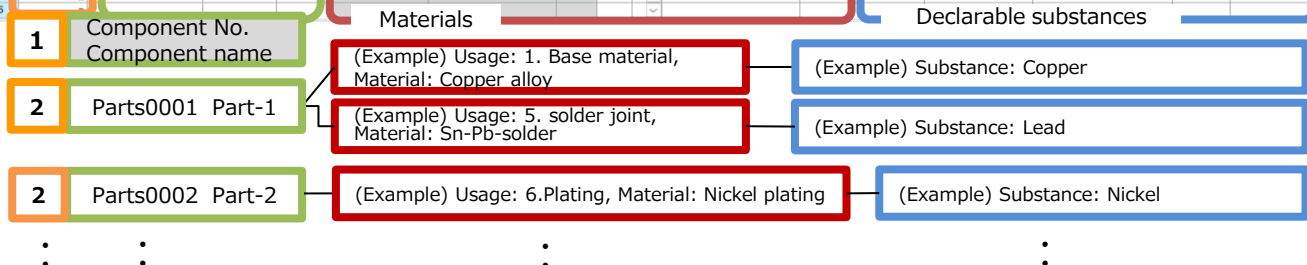
3. Data Entry (Information of Composition)

For operation details, refer to Data entry support tool for Articles Operation manual



12. Entering composition information

1 Composition View layout



※ For original parts, enter the material and reportable substances in the line of the default Composite No. "2."

2 Enter levels and parts

Add appropriate rows with Button **Add component** to create a hierarchical structure and check the Composite No., enter Component No, and Component name.

*For products with component number 1, the Product name and Product number on the General screen will be automatically entered.

3 Select materials

Move to the Usage cell, click **Add material**, select the usage of material and material from pull-down menu, and then enter the mass and unit.

4 Enter declarable substances

- If substances selected by chemSHERPA management standards are contained, they must be reported.
- The right table provides an overview of report evaluation criteria for declarable substances.

<Note> "Threshold under Regulations" in this right table indicates allowable concentration of declarable substances under a relevant standard selected from Regulations. If there is more than one value, the most stringent shall be used in principle.



Rules on the use of information on CiP under the chemSHERPA(Ver1.5)(English)[pdf]

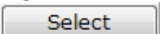
Threshold under Regulations	Concentration of declarable substance	Whether to transfer composition information
Clarified as reportable application, or application unknown	Prescribed threshold is greater than 0.1wt%	Equal to or greater than allowable concentration under Regulations Requires providing composition information, including declarable substances.
	Below 0.1wt% of chemSHERPA's voluntary criteria	Provide composition information including declarable substances, in line with voluntary criteria under chemSHERPA.
	Prescribed threshold is equal to or below 0.1wt%	Equal to or greater than allowable concentration under Regulations Requires providing composition information of declarable substances in products.
	Below allowable concentration under Regulations	Not required to provide composition information of declarable substances in products. Optional reporting.
Clarified as other than reportable application	Equal to or greater than 0.1wt% of chemSHERPA's voluntary criteria	Provide composition information including declarable substances, in line with voluntary criteria under chemSHERPA.
	Below 0.1wt% of chemSHERPA's voluntary criteria	Not required to provide composition information of declarable substances in products. Optional reporting.

c. If you want to report substances not covered by chemSHERPA management standards, they can be entered as optional reporting substances.
In this case, place a check in the Optional reporting field.

d. You can use the search function (substance selection dialog) when entering declarable substances.

(1) Select the cell of the "Substances" or "CAS No." [Substance selection dialog]

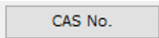
in the ingredient information page, and then

press .

- To search by CAS No. -

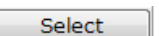
(2) Enter the CAS No. in the Search field.

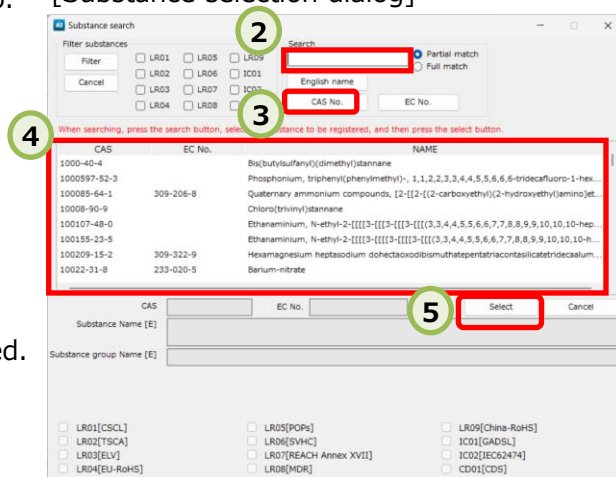
- You can also search "English Name," or "EC No"

(3) Click  button.

You can press it again to switch between choices.

(4) Confirm the substance for which you searched.

(5) Click  button.



Substance search dialog box showing search criteria and results. The dialog includes a search field, filter options, and a list of substances with CAS No., EC No., and NAME columns. A 'Select' button is visible at the bottom right.

e. Method for "select exemption" etc.

To report substances covered in part by "ELV," "RoHS," as well as "REACH Annex XVII" and "POPs Annex I," select the substance usage and exemption code from the Select exemption dialog.

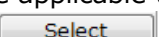
- To select an RoHS exemption code -

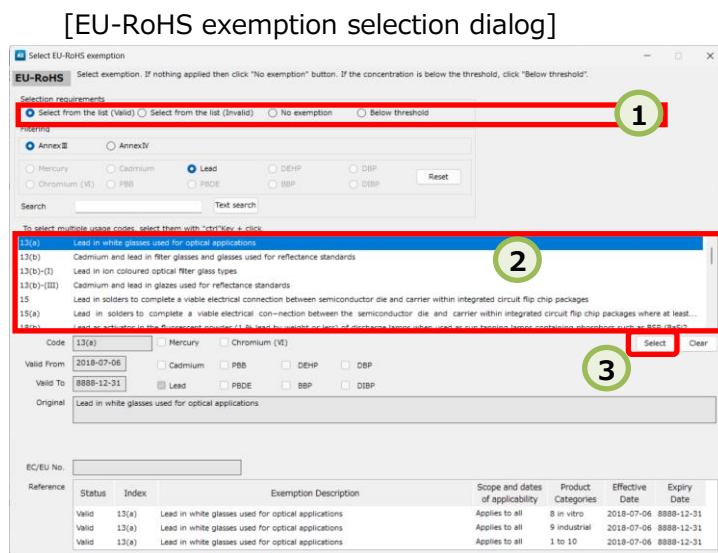
(1) Select a "Selection Condition." (Refer to the table below.)

	Selection Condition	
	If exemption is applied	If exemption is not applied
Content percentage exceeds threshold	Select from list	No exemption
Content percentage at threshold or lower	Below threshold or Select from list	Below threshold

To select from the list

(2) Select the applicable usage from the list.

(3) Click the  button.



EU-RoHS exemption selection dialog box. It shows selection criteria (Valid, Invalid, No exemption, Below threshold) and a list of exemptions. A 'Select' button is visible at the bottom right.

f. Enter the content percentage.

Record the content percentage of the declarable substance with the mass of each material (homogeneous material) as the denominator.
(You can enter either the maximum percentage.)

4-1. Data Entry in Compliance Assessment (Convert from Composition)

For operation details, refer to Data entry support tool for Articles Operation manual



17. Automatic conversion format for Convert from Composition

1 Automatic conversion from Composition

Clicking "Convert from Composition" in the article tool's Compliance window after finalizing the composition information

2 Filter applicable substances

In order to check "Subject substances" in the judgment target column and narrow down the display to substances that may be entered as "Y", Check, check "Show "ON" only" at the top

- * The filtering function should be used when there are many "N" items in the content decision field

3 Enter content decisions

Check the applicable substances and related information (reportable applications, reporting threshold), and then select "Y" or "N" for each line labeled "Entry Y"

*Select "Y" for "content above the threshold" if it matches the reporting use and the content rate is equal or higher than the reporting threshold. Select "N" if it does not match the "reporting use" or if it is less than the threshold.

4 Check content information

Check the information such as the content rate, usage, and portion used.

5 Enter usage codes

(1) Double-click the cell in which to enter a usage code to open the selection view.

(2) Select the appropriate code, and then click **Select** button.

6 Check errors and confirm

Click **Error check** button at the bottom of the view, check errors, and then confirm with the **Finalize** button.

13. Enter compliance assessment information

File

Compliance

Product number

Finalization date

Subject area

IEC62474

Product name

Overall content flag

Compliance

All show

Filtering

Add

Delete

Convert from Composition

All clear

Update

Simplify

Enlarge or Reduce: Ctrl+cr

Subject substance		Candidate item	ID	Referenced laws & regulations	Reportable applications	Reporting threshold	Content above the threshold <input type="checkbox"/> Show "Y" only Batch "N"	Content ate (ppm)	Quantity of content Quantity of content Un	Usage code Input: Cell double-click	Usage
CAS No./ Substance group ID	Substance/Substance group	<input type="checkbox"/> Show "ON" only Clear									
1	SG001 Asbestos	<input type="checkbox"/>	0003	[EU] REACH Regulation (EC) ...	All	Intentionally added [Report					
2	SG002 Azocoloursants and a	<input type="checkbox"/>	0004	[EU] REACH Regulation (EC) ...	Textiles and ...	0.003% by weight of the fin					
3	SG003 Boric acid	<input type="checkbox"/>	0007	[EU] REACH Regulation (EC) ...	All	0.1 mass% of article [Repor					
4	SG004 Brominated flame re	<input type="checkbox"/>	0008	(Standard) IEC 61249-2-21; ...	Printed wirin	0.09 mass% total bromine c					
5			0009	(Standard) JEDEC JS709	Plastic mate...	0.1 mass% of bromine in pl					
6	SG006 Cadmium/Cadmium c	<input type="checkbox"/>	0010	[EU] RoHS Directive 2011/65...	All, except b...	0.01 mass% of total Cd in h					
7	compounds		0011	[EU] Battery Directive 2006/6...	Batteries	0.001% by weight of batter					Please ent
8			0166	[USA California] Electronic W...	Video displa...	0.01 mass% of total Cd in h					Please ent
9	SG008 Chromium (VI) Com...	<input type="checkbox"/>	0012	[EU] RoHS Directive 2011/65...	All	0.1 mass% of total Cr+6 in					Please ent
10			0167	[USA California] Electronic W...	Video displa...	0.1 mass% of total Cr+6 in					Please ent
11	SG009 Dibutyltin (DBT) com	<input type="checkbox"/>	0014	[EU] REACH Regulation (EC) ...	All	0.1 mass% of tin in the part					Please ent
12	SG010 Diocetyltn (DOT) com	<input type="checkbox"/>	0015	[EU] REACH Regulation (EC) ...	(a) textile a...	0.1 mass% of tin in the part					Please ent
13	SG011 Disodium tetraborat...	<input type="checkbox"/>	0017	[EU] REACH Regulation (EC) ...	All	0.1 mass% of article [Repor					Please ent
14	SG012 Fluorinated Greenho...	<input type="checkbox"/>	0018	[EU] REGULATION (EU) No 5...	All	Intentionally Added [Report					
15	Applicable substance	Subject to decision	0020	[EU] REACH Regulation (EC) ...	All	Intentionally Added [Report	Content decision	Content information (1)	Usage code	Content Information (2)	
16	SG...		0021	[EU] Consumer Product Saf...	Consumer pro...	0.01 mass% [Reporting Lev...					
17	SG...		0022	[EU] Consumer Product Saf...	Consumer pro...	0.01 mass% [Reporting Lev...					

8

5. Integration

For operation details, refer to Data entry support tool for Articles Operation manual



8. Enter data by using integration function

- 1 start the chemSHERPA-AI (creation assistance) tool
- 2 Click [Tools], and then click [Integration]

General	
Issuer/Authorizer	
Reference number *	Remarks
Preparation Date * <yyyy-mm-dd>	<input checked="" type="checkbox"/> Composition <input type="checkbox"/> FMD
Authorization Date * <yyyy-mm-dd>	<input checked="" type="checkbox"/> Compliance
Item	English Local
Company name *	
Name of contact *	
Comment	
Authorizer name *	
Reporting of Candidate of Declarable Substances	<input type="radio"/> Yes <input type="radio"/> No
SCIP info.	<input type="checkbox"/> Composition/FMD <input type="checkbox"/> Compliance

- 3 Load the files to integrate

Integration view

ToolVersion:chemSHERPA-AI-V2R1.00.0

Article Tool

Integration

Enlarge or Reduce: Ctrl+scroll

File selection window

Return to general

Items for integration

Handling of composition after integration

Execute integration

- 4 Select files
Select the files to combine, and then click [Open]
- 5 Integrate

Click [Execute integration]

* The usage amount or quantity must be entered in advance

Return to general

Items for integration

Handling of composition after integration

Execute integration

6. Confirming Obtained or Entered Data

Check first

- ✓ Can the shai file be imported without error?
- ✓ Have all required items been entered?
- ✓ Are there any entry mistakes, such as typos or omitted characters?

1 Check general information

File Company Language Tool

■ General

Issuer/Authorizer

Reference number * Remarks

Preparation Date * <yyyy-mm-dd> ☒ Composition ☐ FMD

Authorization Date * <yyyy-mm-dd> ☒ Compliance

Item English Local

Company name *

Name of contact *

Comment

Authorizer name *

Reporting of Candidate of Declarable Substances ☐ Yes ☐ No

SCIP info. ☐ Composition/FMD ☐ Compliance

Check version number/date information
(1) Is the reference number correct?
(2) Are the creation and approval date correct?

Check remarks
(1) Are necessary communication items selected?

Check issuer/approver information
Are the company name, representative name, and approver name correct?

Check version number/date information
(1) Is the reference number correct?
(2) Are the creation and approval dates correct?
(3) Does "Transmit compliance decision information only" need to be checked or not?

Check requester information
Are the company name, representative name, and requester name correct?

ChemSHERPA-AI Article Tool

Requester ☒ Information on requester On/Off

Reference number * Remarks

Request date * <yyyy-mm-dd> ☒ Composition ☐ FMD

Reply deadline <yyyy-mm-dd> ☒ Compliance

Item English Local

Company name *

Requester Name

Requester Comment

Reporting of Candidate of Declarable Substances ☐ Yes ☐ No

Product/Component ☒ Product ☒ Administrative

Citing Delete Add

	Requester	Product									
	product name	Product number	Product name	Product number	Manufacturer name	Mass	Unit of mass	Product series name	Reporting unit	Remarks	Overall content flag
1	<input type="checkbox"/> Show	<input type="checkbox"/> Show									
2	<input type="checkbox"/> Show	<input type="checkbox"/> Show									
3	<input type="checkbox"/> Show	<input type="checkbox"/> Show									
4	<input type="checkbox"/> Show	<input type="checkbox"/> Show									
5	<input type="checkbox"/> Show	<input type="checkbox"/> Show									

Check product information
(1) Is the product name correct?
(2) Are the product stock number and manufacturer name correct?
(3) Are the mass and mass unit correct?

For series responses
(1) Is the series product name correct?
(2) Is the report unit correct?

Check other information
(1) Was the date of issue entered?

2 Check the information of composition

File ChemSHERPA-AI Article Tool

Composition

Product number: Finalization date: Subject area: IEC62474

Product name: Mass of product: Composition/FMD: Composition

Enlarge or Reduce: Ctrl+scroll

Composition

Update substance information Delete Pseudo Substances & Misc All clear

Component				Material				Substance				Substances (including candidates)		Regulations, etc.			
Composite No.	Component No.	Component name	Quantity	Usage	Classification symbol	Name	Mass	Unit	Material code of public standard	Remarks	Substance	CAS No.	Maximum content rate per materials (%)	Remarks	CSCL	TSC	
1	1			Select material	Add material						Select	Add substance			Applicable	Applicable	Sub
2	2			Quote CI	Delete material						Delete substance						
3	2																
4	2																

Parts

Materials

Declarable substances

Regulations, etc.

Parts

- (1) Are all parts listed?
- (2) Is the composite No. correct?
- (3) Is the Component No. / Component name correct?
- (4) Is the quantity correct?

Declarable substances

- (1) Check that there are no duplicate substance names
- (2) Is the content percentage correct?

Materials

- (1) Is the selected usage correct?
- (2) Is the mass correct?
- (3) Is the selected unit correct?

Regulations, etc.

- (1) If there are any voluntary declarable substances, is the "Except for Declarable Substances" field checked?
- (2) Is the relevant law flagged?
- (3) Are exception codes registered for managed substances?

3 Check the information of compliance assessment

File ChemSHERPA-AI Article Tool

Compliance

Product number: Finalization date: Subject area: IEC62474

Product name: Overall content flag:

Enlarge or Reduce: Ctrl+scroll

Compliance All show Filtering Add Delete Convert from Composition All clear Update Simplify

CAS No./ Substance group ID	Substance/Substance group	Candidate item	ID	Referenced laws & regulations	Reportable applications	Reporting threshold	Content above the threshold		Quantity of content	Usage code
							Content rate (ppm)	Quantity of content		
1	SG001 Asbestos	<input type="checkbox"/>	00003	[EU] REACH Regulation (EC) ...	All	Intentionally added [Report...				
2	SG002 Azocolourants and a...	<input type="checkbox"/>	00004	[EU] REACH Regulation (EC) ...	Textiles and ...	0.003% by weight of the fin...				
3	SG003 Boric acid	<input type="checkbox"/>	00007	[EU] REACH Regulation (EC) ...	All	0.1 mass% of article [Repor...				
4	SG004 Brominated flame re...	<input type="checkbox"/>	00008	(Standard) IEC 61249-2-21; ...	Printed wirin...	0.09 mass% total bromine c...				
5			00009	(Standard) JEDEC JS709	Plastic mate...	0.1 mass% of bromine in pl...				
6	SG006 Cadmium/Cadmium co...	<input type="checkbox"/>	00010	[EU] RoHS Directive 2011/65...	All, except b...	0.01 mass% of total Cd in h...				EU-RoHS...
7			00011	[EU] Battery Directive 2006/6...	Batteries	0.001% by weight of batter...				
8			00166	[USA California] Electronic W...	Video displa...	0.01 mass% of total Cd in h...				Please ent...
9	SG008 Chromium (VI) Com...	<input type="checkbox"/>	00012	[EU] RoHS Directive 2011/65...	All	0.1 mass% of total Cr+6 in ...				Please ent...

Content decision

- (1) Confirm that "Entry Y" is not listed

Confirm "Y" decision items

- (1) Is the content percentage correct?
- (2) Is the usage correct?
- (3) Is the portion used correct?

7. Entering SCIP information

For operation details, refer to Data entry support tool for Articles Operation manual

1 Select [SCIP information]

Issuer/Authorizer	
Reference number *	Wire
Preparation Date *	2023-09-19
Authorization Date *	2023-09-19
Item	English Local
Company name *	SHERPA CORPORATION シェルパ株式会社
Name of contact *	Hanako Tanto 担当花子
Comment	
Authorizer name *	Taro Shonin 承認太郎
Reporting of Candidate of Declarable Substances	<input type="radio"/> Yes <input checked="" type="radio"/> No
SCIP info.	<input checked="" type="checkbox"/> Composition/FMD <input checked="" type="checkbox"/> Compliance



12.8. Enter SCIP information

13.5. Enter SCIP information (Optional)

Check both [composition/FMD] and [compliance] or only [composition/FMD] in the SCIP info. column of the General information view. (Refer to the next page when selecting only [compliance])

2 Enter Composition information

After transitioning to the [Composition] and entering the information that needs to be reported, Click **Error check** button at the bottom of the view, confirm that there are no errors, and then click **Finalize** button.

3 Enter SCIP information

If SVHC information that may require SCIP registration is described in [Composition], [SCIP information view] will be displayed. Add / correct the necessary information and make an appropriate selection.

Composition									
SCIP									
Enlarge or Reduce: Ctrl+scroll									
Set default value									
	Product name	Component no	Component name	Number	Row	Primary Article Identifier	Article Name	Article Category	Production in European Union
1	Wire					HIJ4567	Wire	8544110000 Select Electrical ma...	EU or EEA imp
2					4				

【Notes on entry】

① Only "half-width alphanumerical characters" can be entered.

② Enter the TARIC code in Article Category.

* TARIC code is an item code (10 digits) specified by the EU for tariffs. You can search at the following URL. Also, since the first 6 digits of the code are common throughout the world, you can also search on the Japanese customs classification site.

【TARIC code】

https://ec.europa.eu/taxation_customs/dds2/taric/taric_consultation.jsp?Lang=en

【Japan's tariff rate table】

<https://www.customs.go.jp/english/index.htm>

③ It is not necessary to enter the SCIP information of the composition other than the selected Material Category for the rows where nothing is displayed in the second and lower Level names. In this case, the same information as the product line (first line) is copied when the "Update" button is clicked.

4 Save the information data

Click **Update** button, check that there are no errors, and then click **Close** button.

* If you also want to enter compliance information, continue to the next page.



chemSHERPA Data Entry Support Tool for Articles Data entry manual
【Article Category】

5 Move to compliance view and enter the data

After clicking **Convert from Composition** button to reflect the composition information, enter and select supplementary information. After entering the information, click **Error check** button at the bottom of the view, check that there are no errors, and then click **Finalize** button.

6 Save SCIP information data

If there is SVHC information that may require SCIP registration on the compliance view, The "SCIP information view" will be displayed. Add / correct the necessary information and make an appropriate selection. It is not necessary to newly input the SCIP information confirmed on the component information view.

Click **Update** button, check that there are no errors, and then click **Close** button.

* The following is the case of directly inputting the compliance information without using the conversion from the composition information.

7 Enter compliance data

■ General

Issuer/Authorizer	
Reference number	* Wire
Preparation Date	* 2023-09-19
Authorization Date	* 2023-09-19
Remarks	
<input type="checkbox"/> Composition <input checked="" type="checkbox"/> FMD	
<input checked="" type="checkbox"/> Compliance	
Item	English Local
Company name	* SHERPA CORPORATION シェルパ株式会社
Name of contact	* Hanako Tanto 担当花子
Comment	
Authorizer name	* Taro Shonin 承認太郎
Reporting of Candidate of Declarable Substances	<input type="radio"/> Yes <input checked="" type="radio"/> No
SCIP info.	<input type="checkbox"/> Composition/FMD <input checked="" type="checkbox"/> Compliance

Check the check box only for [Compliance] in the SCIP information column of the General information view. Display the Compliance view, enter the information that needs to be reported, click **Error check** button at the bottom of the screen, confirm that there are no errors, and click **Finalize** button.

8 Enter SCIP information data

If the SVHC information that needs to be registered in SCIP is described in [Compliance], the SCIP Information view will be displayed. Add / correct the necessary information and make an appropriate selection.

■ Compliance

SCIP Enlarge or Reduce: Ctrl+scroll Set default value

	Product name	Row	ID	CAS No. / Substance group ID	Substance/ Substance group	Content rate (ppm)	Portion used	Material Category	Material name	Primary Article Identifier	Article Name	Article Cat
1	Wire		81.00038	117-81-7	Bis (2-ethylhexyl)p...	150000	Core wire	66494	Select plastic (a...	H1J4567	Wire	8544110000 Select
2										H1J4567	Wire	8544110000 Select

[Notes on entry]

The layout is different from the SCIP information view displayed on the Composition view, but the description is the same. See item **3** on the previous page.

9 Save the information data

Click **Update** button, check that there are no errors, and then click **Close** button.

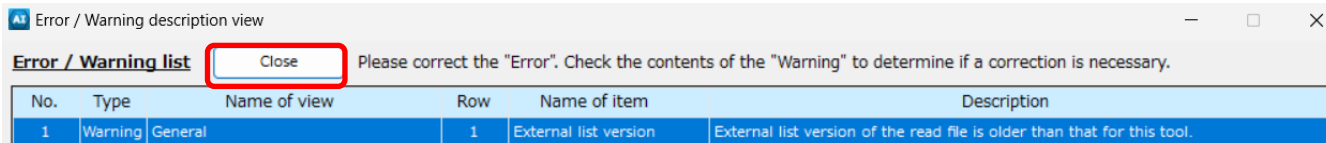
8-1. Data update for older version(Composition information)

For operation details, refer to Data entry support tool for Articles Operation manual



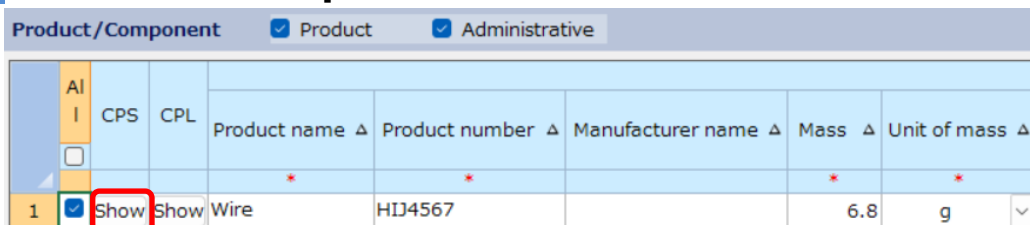
12. Entering composition information

- 1 start the chemSHERPA-AI (creation assistance) tool
- 2 load old version file



* Click "Close" on the warning

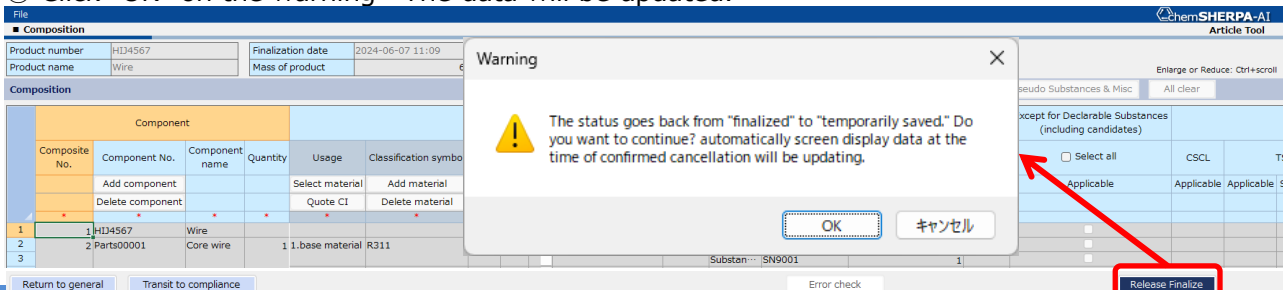
3 Move to Composition screen



* Click the "Show" button above to move to Composition screen.

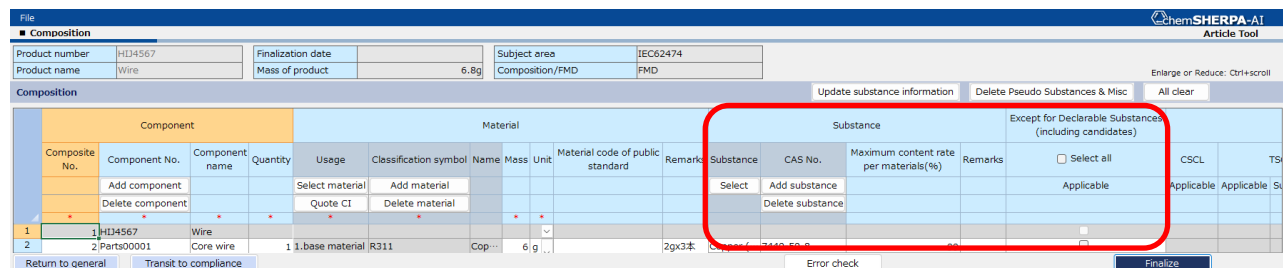
4 Update the data

- ① Click "Release Finalize" button.
- ② Click "OK" on the warning⇒The data will be updated.



5 Confirmation of Declarable Substances

If the product contains corresponding substances that has been added or deleted among the declarable substances listed in the latest tool, take measures such as adding or deleting it in the Composition window.(Refer to the manual "Explanation_of_chemSHERPA_Declarable_Substances")



6 Check errors and confirm

Click **Error check** button at the bottom of the screen, check the error, and click **Finalize** button.

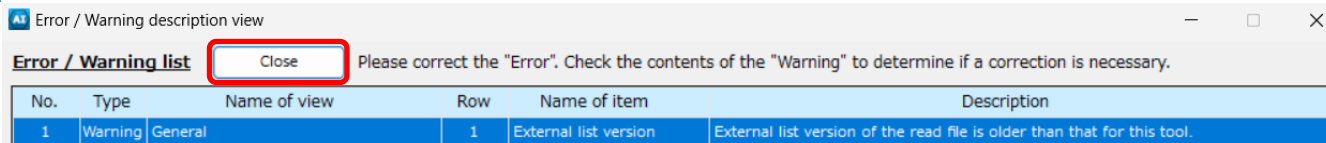
8-2. Data update for older version(Compliance information)

For operation details, refer to Data entry support tool for Articles Operation manual



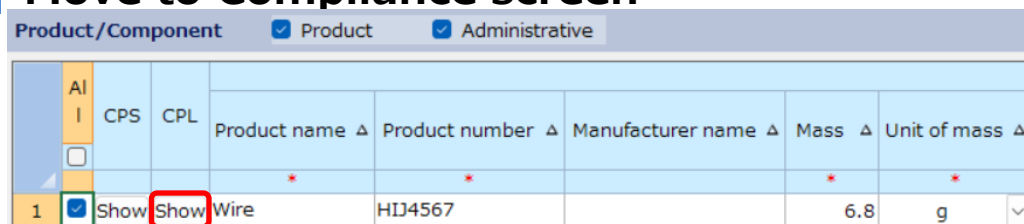
13. Entering compliance information

- 1 start the chemSHERPA-AI (creation assistance) tool
- 2 load old version file



* Click "Close" on the warning

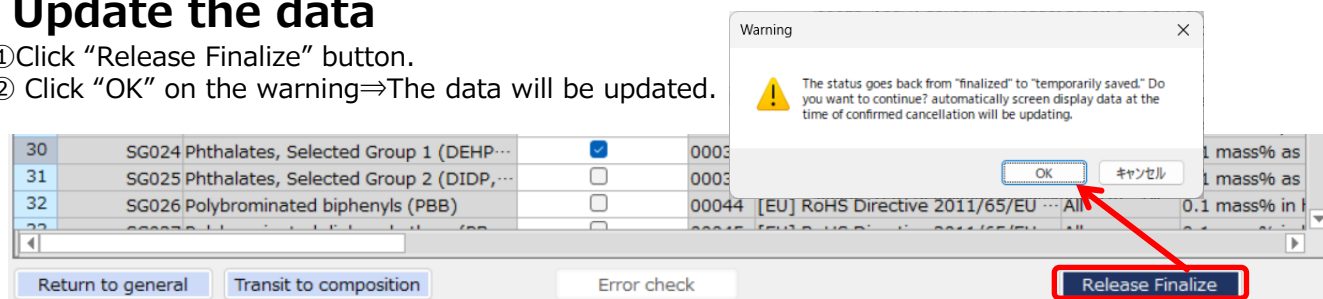
- 3 Move to Compliance screen



* Click the "Show" button above to move to Compliance screen.

- 4 Update the data

- ① Click "Release Finalize" button.
- ② Click "OK" on the warning⇒The data will be updated.



- If there is no revised information between the old version and the latest version, the entry information such as "content above the threshold", etc. is maintained.
- If the entry information such as "content above the threshold" of the reporting ID that was newly added in the latest version, the entry information such as "content above the threshold", etc. is displayed as a blank column.
- If there is no change in the reporting ID and the reporting threshold etc. is changed, only if the content above the threshold level is Y, the information is carried over as follows.
 - "content above the threshold" is carried over as "EntryY"
 - "Quantity of content", "unit", "Usage", "Portion used", and "Remarks" will be carried over.

- 5 Input Content information, etc

CAS No./ Substance group ID	Subject substance	Candidate item	ID	Referenced laws & regulations	Reportable applications	Reporting threshold	Content above the threshold	Content rate (ppm)	Quantity of content		Usage code	Usage	Portion used	Remarks
							Show "Y" only		Quantity of content	Unit				
30	SG024 Phthalates, Selected Group 1 (DEHP...	<input checked="" type="checkbox"/>	00036	[EU] REA...	Children's ...	0.1 mass...	Entry Y	150000	120	mg	ZZ-RepAp...	2.被覆	Core wire	
81	117-81-7 Bis (2-ethylhexyl)phthalate (...)	<input checked="" type="checkbox"/>	00038	[EU] RoH...	All	0.1 mass...	Entry Y	150000	120	mg	EU-RoHS...	2.被覆	Core wire	

*If the composition information has been updated first, the compliance information can be updated by clicking "Convert from Composition" button.

⇒ For the operation, refer to the chapter [Data Entry in Compliance Assessment (Convert from Composition)]

- 6 Check errors and confirm

Click **Error check** button at the bottom of the screen, check the error, and click **Finalize** button.

9. Creating data for answering the request file

For operation details, refer to Data entry support tool for Articles Operation manual



6. Entering existing data in chemSHERPA

1 start the chemSHERPA-AI tool

2 Import the request file

Confirm the information on requester

File Company Language Tool				ChemSHERPA-AI Article Tool	
General					
Issuer/Authorizer		Requester		Information on requester On/Off	
Reference number *		Remarks	Reference number *	1234	
Preparation Date *	<yyyy-mm-dd>	<input checked="" type="checkbox"/> Composition <input type="checkbox"/> FMD	Request date *	2024-09-02	
Authorization Date *	<yyyy-mm-dd>	<input checked="" type="checkbox"/> Compliance	Reply deadline	2024-09-13	
Item	English	Local	Item	English	Local
Company name *			Company name *	BOUEKI CORPORATION	
Name of contact *			Requester Name *	TANTOU YUSHUTSU	
Comment			Requester Comment		
Authorizer name *					
Reporting of Candidate of Declarable Substances		<input type="radio"/> Yes <input checked="" type="radio"/> No	Reporting of Candidate of Declarable Substances		
SCIP info.		<input checked="" type="checkbox"/> Composition/FMD <input checked="" type="checkbox"/> Compliance			

3 Cite created data for each surveyed product

Product/Component		<input checked="" type="checkbox"/> Product <input checked="" type="checkbox"/> Administrative		Citing	
AI	CPS	CPL	Requester		
			Product name	Product number	Product name
1	<input checked="" type="checkbox"/>	Show	Wire	HIJ4567	
2	<input type="checkbox"/>	Show	DiodeA	DiodeA-001	

① Check the product in the requester product.

② Click **Citing** button .

③ Select the created data (.shai file) from the dialog box.

File selection window

③

The created data is reflected

4 Confirm the information and output the file

Click **Error check** button , after confirming that there are no errors,
Click **Output (Authorization)** button.

10. CI Data's AI Initiatives

For details on operation, refer to the chemSHERPA Data Entry Support Tool for Articles Operation Manual.



12.5. Entering substance information (when quoting from chemSHERPA-CI)

1 Launch chemSHERPA-AI tool

2 Move to Composition screen

Product/Component		<input checked="" type="checkbox"/> Product	<input checked="" type="checkbox"/> Administrative					
AI	CPS	CPL	Product name ▲	Product number ▲	Manufacturer name ▲	Mass ▲	Unit of mass ▲	
<input type="checkbox"/>			*	*		*	*	
1	<input checked="" type="checkbox"/>	Show	Show	WireA_1m	WireA-1k1		12.8	g

3 If the usage field in the Material has not been filled in, select the material and move the cursor to select the target cell.

Composition					Update substance information		Delete Pseudo Substances & Misc			
	Component				Material					
	Composite No.	Component No.	Component name	Quantity	Usage	Classification symbol	Name	Mass	Unit	
		Add component			Select material	Add material				
		Delete component			Quote CI	Delete material				
	*	*	*	*		*		*	*	
1	1	WireA-1k1	WireA_1m							
2	2	Parts00001	Wire	1	1.base material	R311	Copper (e.g. ...	7.5	g	
3					2.clad	P514	PVC (Poly(vi...	0.8	g	
4	2	Parts00002	Terminal	1	1.base material	R101	Steels/cast s...	2.4997	g	
5					6.plating	S008	Gold plating	0.3	mg	
6					12.marking	S401	Painted resin	2	g	
7										

4 On the 3 screen, press **Quote CI**, and when the screen changes, press **Add** to import the CI data. After selecting the CI file, press

Display composition info. After checking the displayed contents, fill in the data required for "Content rate (%) (Posted to AI)". If you are not going to use a substance that will not remain in the end, uncheck it in "Quote". When you have finished entering all the data, press **Quote** to import the data.

Update substance information

chemSHERPA-CI

chemSHERPA-CI Quotation

Article Tool

chemSHERPA-CI Info

Usage

Classification symbol

Select material

Add material

Quote CI

Delete material

1.base material	R311
2.clad	P514
1.base material	R101
6.plating	S008
12.marking	S401

Name of file

Product name

Content status on declarable substances

External list version

Entry status

Presence of Conversion chemical

1 SHCI_20240830132845_H-001_001.x...

COAT-1000A

1. Content...

2.10.00

2024-08-30 13:27F...

Exist

Add

Delete

Display composition info

When you press this button, the composition information of the above products is displayed.

Product name

Substance Name

CAS No.

Content rate(%) (CI)

Except for Declarable Substances (including candidates)

Conversion chemical (CI)

Conversion chemical (External list)

Content rate(%) (Posted to AI)

Remarks

Quote

1 COAT-1000A

Toluene

108-98-3

70

Volatile

VO

33

揮発性物質です

☒

2 COAT-1000A

Zinc oxide, C.I. 77947

1314-13-2

10

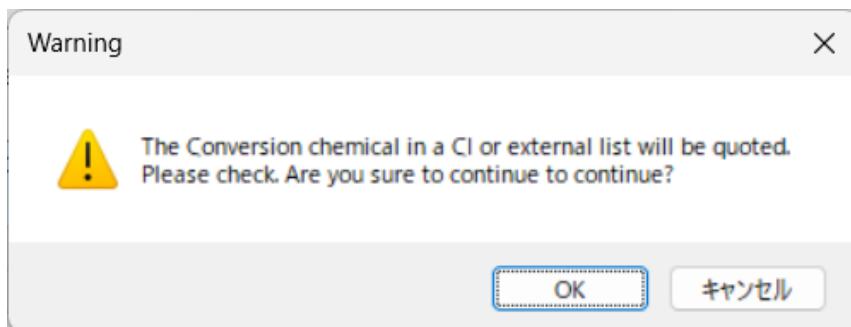
☐

The information communicated in the column of "Conversion chemical" does not cover all substances or phenomena that change during the conversion process. The information should be considered as a piece of reference information, and chemSHERPA-AI data editors should make information after grasping and understanding the phenomena that occur during the conversion process.

Return to Composition

Quote

- 5** When CI data is quoted as Composition information during preparation,
Press OK when the warning dialog appears.



- 6** Confirm that the information of the imported CI data has been reflected. If you want to continue quoting other CI data, repeat the operation from **2**.

Composition															Update substance information				Delete Pseudo Substances & Misc				All clear	
	Component				Material								Substance											
	Composite No.	Component No.	Component name	Quantity	Usage	Classification symbol	Name	Mass	Unit	Material code of public standard	Remarks	Substance	CAS No.	Maximum content rate per materials(%)	Remarks									
		Add component			Select material	Add material						Select	Add substance											
		Delete component			Quote CI	Delete material							Delete substance											
	*	*	*	*	*	*		*	*															
1	1	WireA-1k1	WireA_1m																					
2	2	Parts00001	Wire	1	1.base material	R311	Copper (e.g. ...	7.5	g			Copper (Cu); Cop...	7440-50-8		99									
3					2.clad	P514	PVC (Poly(vin...	0.8	g			Bis(2-ethylhexyl) ...	117-81-7		15									
4	2	Parts00002	Terminal	1	1.base material	R101	Steels/cast st...	2.4997	g			Lead; Lead powd...	7439-92-1		0.2									
5					6.plating	S008	Gold plating	0.3	mg															
6					12.marking	S401	Painted resin	2	g			Zinc oxide; C.I. 7...	1314-13-2		33.3									





1. Copyright

The copyright of this material belongs to the publisher, Joint Article Management Promotion-consortium (JAMP), and copying or reprinting of this material without permission is prohibited, except for exceptions under the Copyright Law. If you want to copy or reprint the texts, charts, etc. contained in this manual, please obtain the permission of the publisher in advance.

2. Limitation of liability

This material shall be used based on the judgment of each person, and the creator / author shall not be liable for any damage caused by it.